

Box 13008, OKC, OK 73113



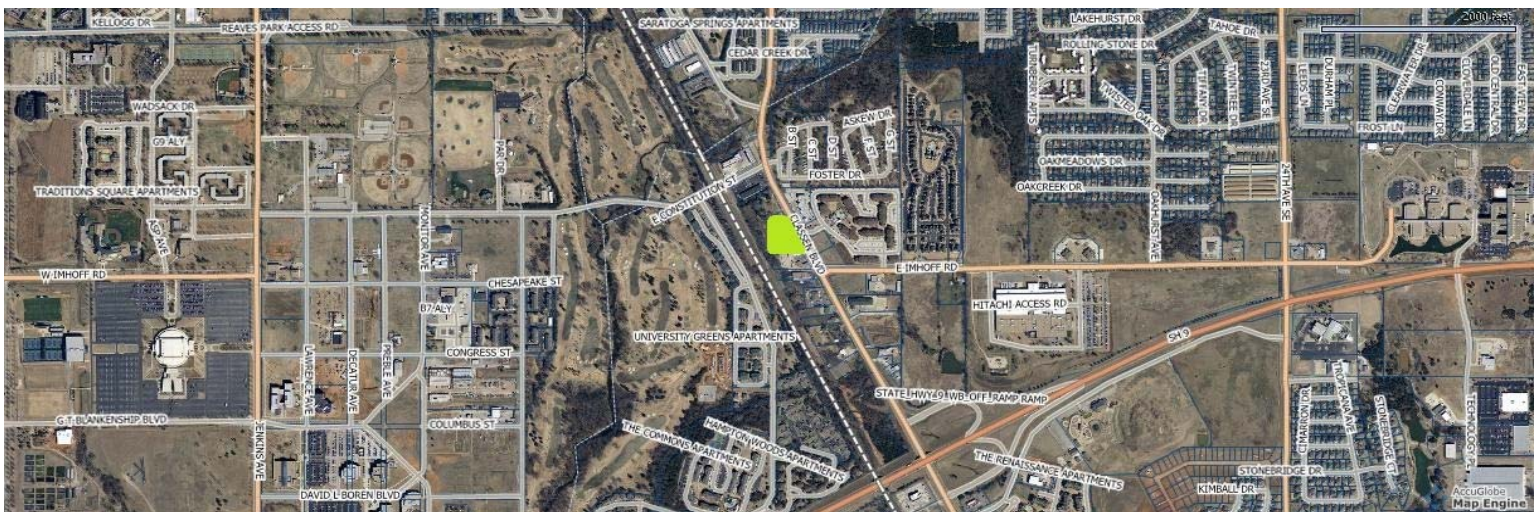
(405) 848-8099

1.55 Acres South Classen Blvd., Norman, Oklahoma



- **340 Feet of Frontage on Classen Boulevard**
- **Water on Site**
- **Within One Mile of National Center for Employment Development, Hitachi Products, Oklahoma University, Lloyd Noble Center, Chickasaw Nation, National Weather Center, Avara Pharmaceutical, Jimmie Austin Golf Club, & Wal-Mart Neighborhood Market**
- **Priced at \$1,150,000.00 (\$17.03 per foot)**

CONTACT: TODD HERNDON, CCIM (405) 848-8099



This document is an informational summary for review by prospective investors/principals and or their advisors to determine their interest in the subject property. Although the information contained herein has been prepared by Herndon and Kelley Commercial Real Estate or has been furnished by sources deemed reliable, none of such information has been verified and no representation, either expressed or implied is made as to the accuracy thereof. All information contained herein is further subject to correction, modification or withdrawal without further notice. This information is confidential in nature, and should not be reproduced in whole or in part without the express consent of the listing broker.