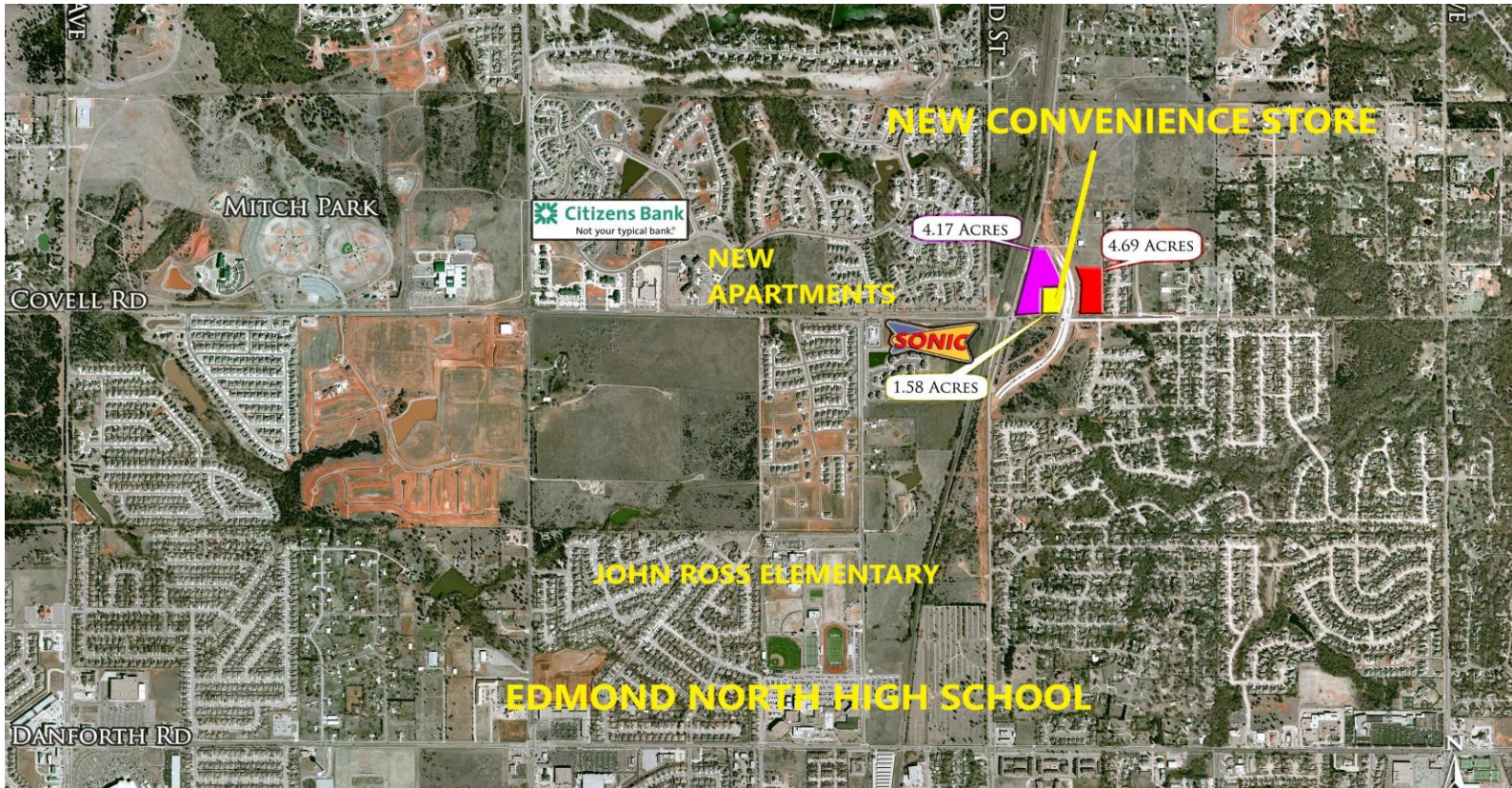


Corner Development Tracts: Covell & Broadway in Edmond, Oklahoma

4.69 Acres on NE/c
(260.5' x 784')
\$1,400,000.00

4.17 Acres wraps NW/c
315' (Covell) and 400' (Broadway)
\$1,100,000.00

1.58 Acres on NW/c
(185' x 372')
\$650,000.00 ***SOLD**



The City of Edmond has completed this intersection. The city continues plans to further widen Covell to provide for a four-lane divided roadway from I-35 to Portland. There will be left turn lanes at all side streets where possible. Plans for Covell will also include street lighting, multi-use/bike paths and landscaping. The Covell intersection of Broadway is one of two that is unimpeded by the N/S trains and Covell is quickly becoming the east-west major thoroughfare of Edmond.

Offered By:

Herndon & Kelley
Commercial Real Estate

Todd Herndon, CCIM
(405) 848-8099

Herndon & Kelley and Herndon & Kelley Commercial Real Estate are wholly owned by Herndon Co. Inc., an Oklahoma Corporation.