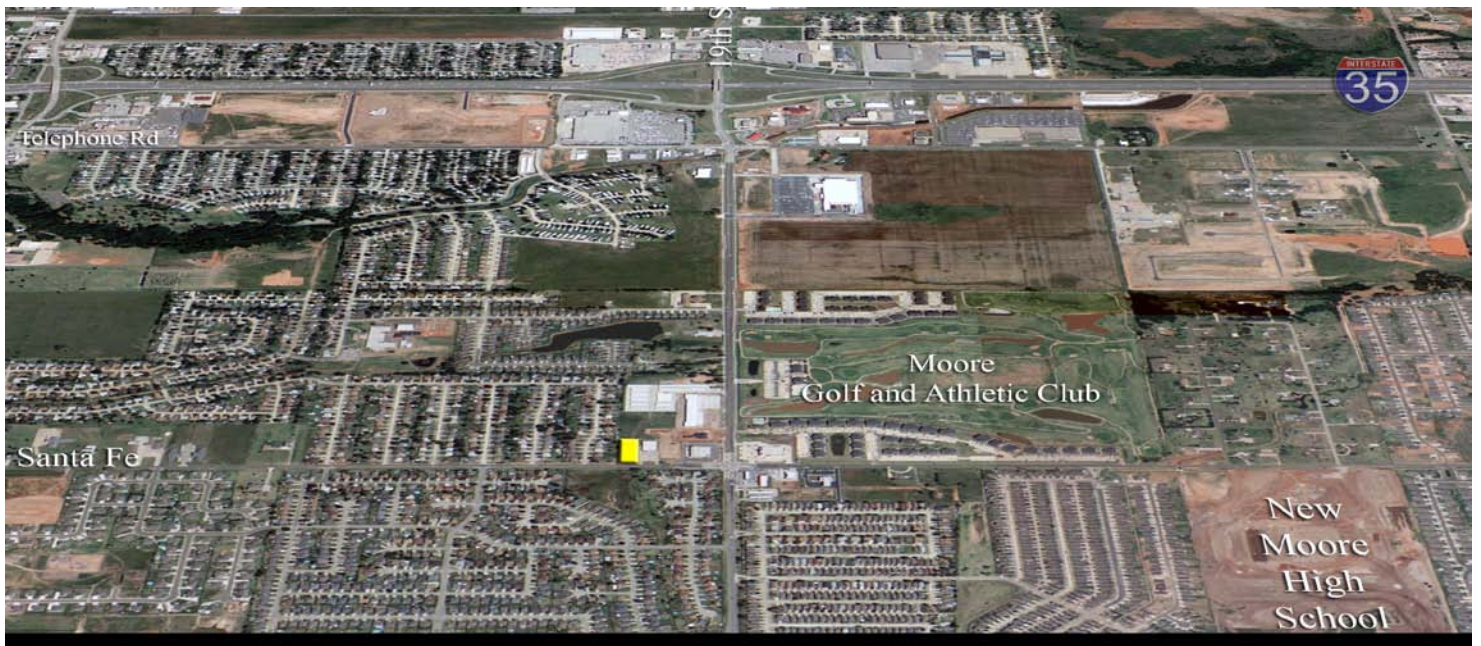
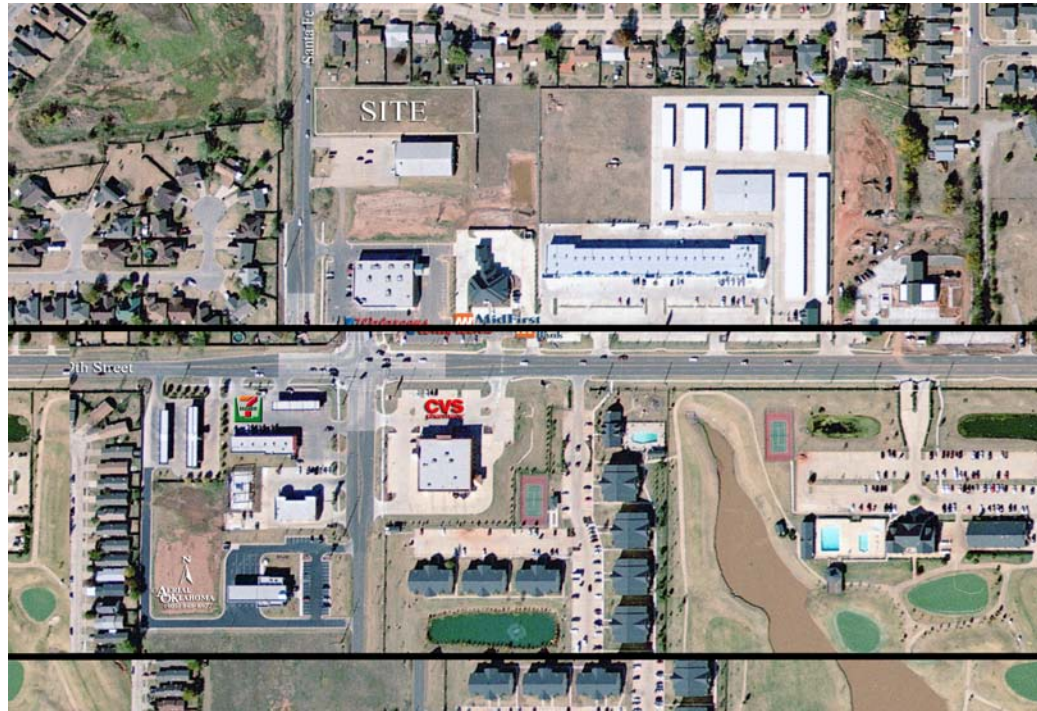


Development Site

19th & Santa Fe Moore, Oklahoma

- Moore School System
- Water on Site. Sewer across 19th.
- Zoned C-2 (Neighborhood Commercial)
- Tract 1: 107' x 384' north of Dollar General.
- Commercial uses in vicinity include Walgreens, CVS, 7-11, Shell Service Station, Dollar General, Daylight Donuts, multiple housing developments including apartments, and Moore Golf and Athletic Club.
- Price \$6.00/Sq. Ft., or Build to Suit



Contact Herndon & Kelley: Todd Herndon, CCIM (405) 848-8099

This document is an informational summary for review by prospective investors/principals and or their advisors to determine their interest in the subject property. Although the information contained herein has been prepared by Herndon and Kelley Commercial Real Estate or has been furnished by sources deemed reliable, none of such information has been verified and no representation, either expressed or implied is made as to the accuracy thereof. All information contained herein is further subject to correction, modification or withdrawal without further notice. This information is confidential in nature, and should not be reproduced in whole or in part without the express consent of the listing broker.